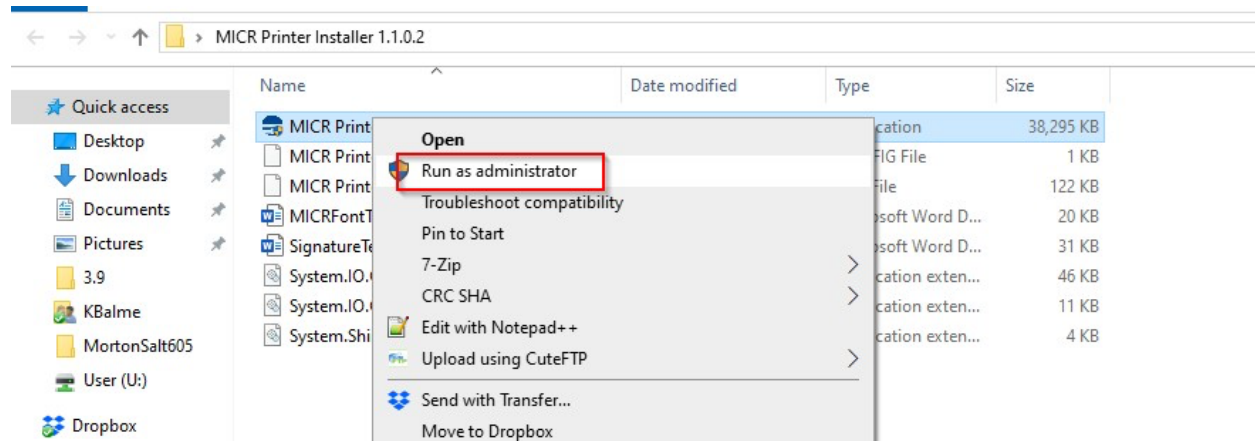




# TROY Group MICR Printer Installation Assistant User's Guide

The TROY Group MICR Printer Installation assistant will automatically install your TROY printer based on input you provide.

**\*\*Run as Administrator on TROY MICR Printer Installer.exe** click on the MICR Printer Installer.exe. Please note that this program requires Administrator level access to run correctly and will request Windows Administrator elevation if you are not currently running as the Administrator.



**\*\*Windows 10 users must set UAC under User Accounts to 'Never notify' while the installation is running.**

### Choose when to be notified about changes to your computer

User Account Control helps prevent potentially harmful programs from making changes to your computer.

[Tell me more about User Account Control settings](#)


Always notify



Never notify

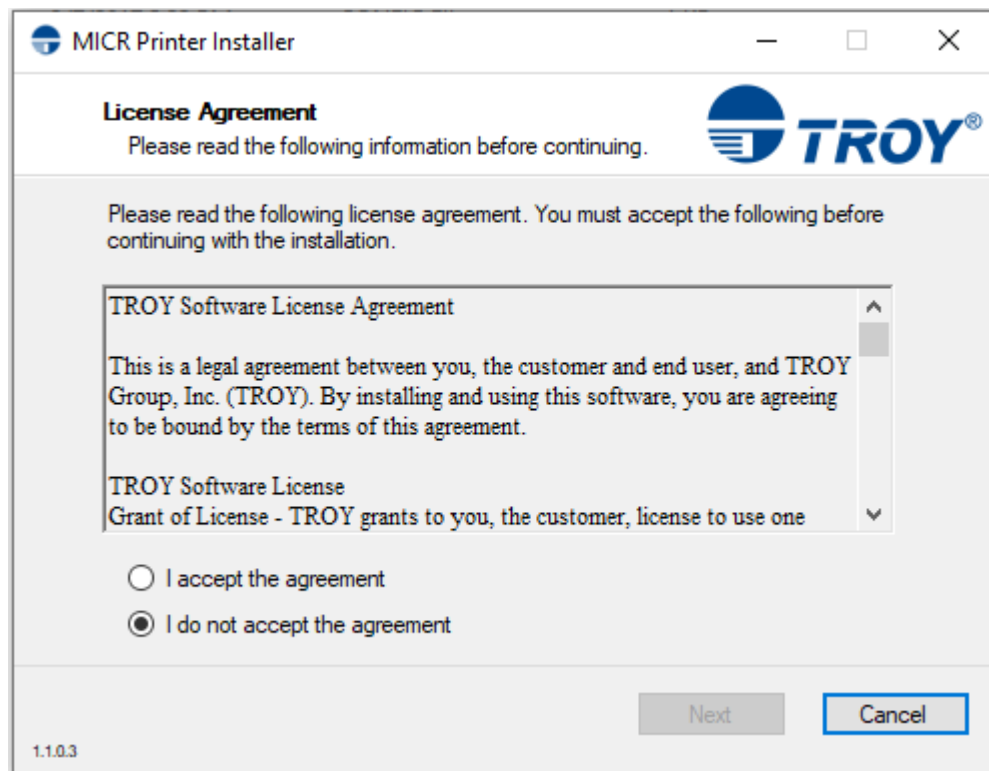
#### Never notify me when:

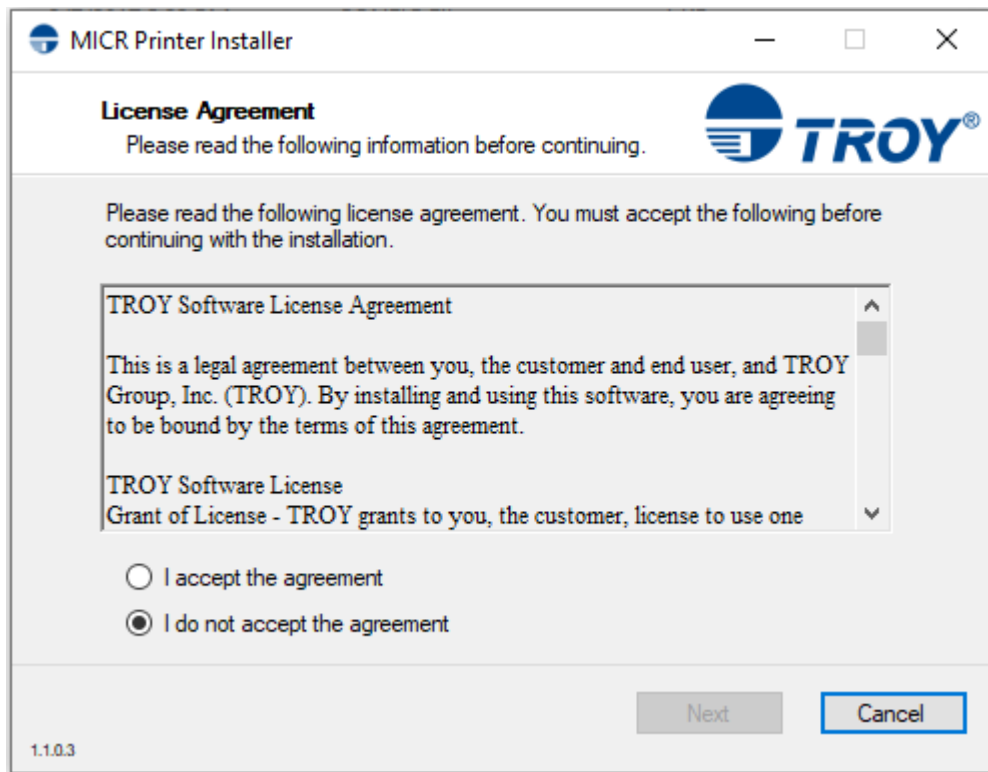
- Apps try to install software or make changes to my computer
- I make changes to Windows settings

 Not recommended.

 OK

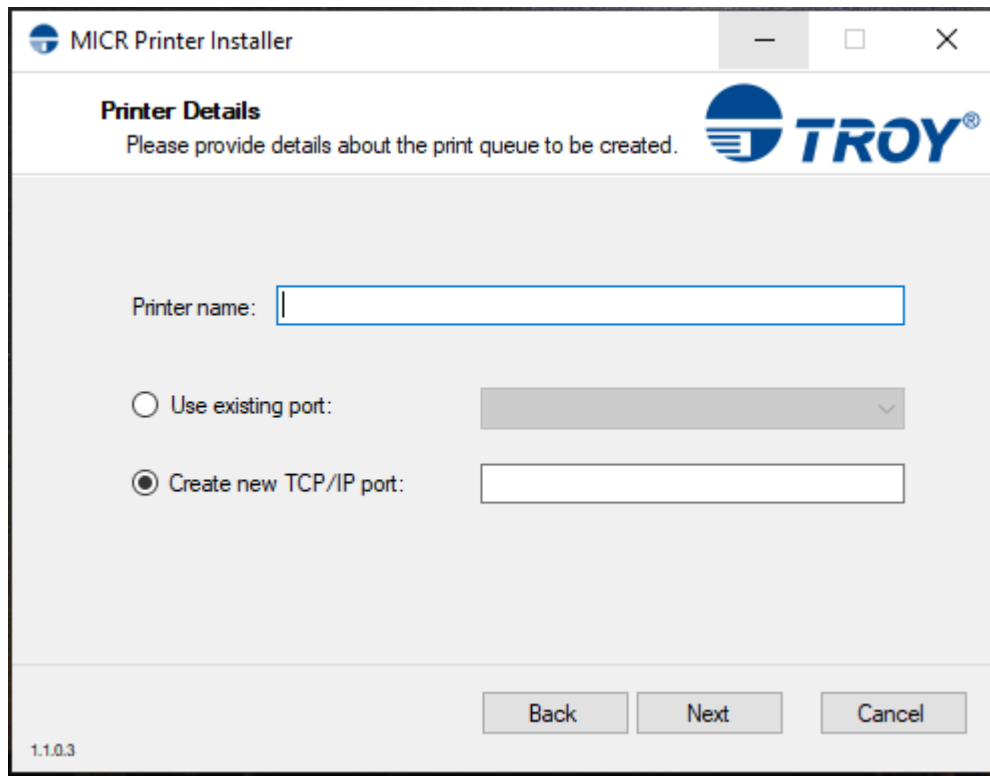
**\*\*Windows 10 users may encounter Windows Defender blocking the Micr Printerinstaller.exe. Please check with your company policy before clicking on the 'run anyway' option.\*\***





### **Install Type:**

- **Full Installation** – Creates a new print queue using the HP Universal PCL 5 driver, loads font configurations to the queue, and installs the required True Type fonts.
- **Existing print queue** – Loads font configurations to existing print queues that are using the HP Universal Printing PCL 5 driver and installs the required True Type fonts.
- **True Type fonts only** – Installs True Type fonts but does not do any print queue configuration.



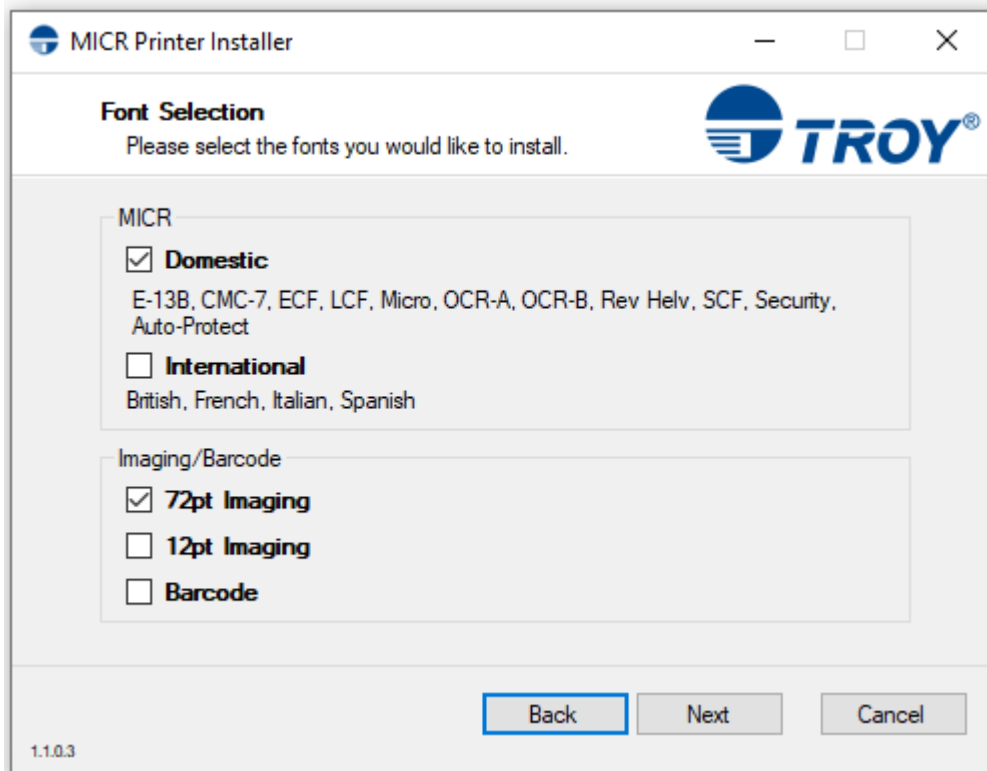
### **Printer Name:**

The printer will appear with this name from the Windows print queue. If you have selected USB Printer as your Install Type, you will be presented with a dropdown list of the installed printers. Select the printer you wish to add the TROY fonts to from this list.

### **Printer Port Type:**

Select **Use existing port: option** if your IP address is already set up on your local desktop or server. Or if you are doing a local installation such as a USB install, select the proper port.

Select **Create new TCP/IP port:** option if your IP address is not yet set up locally in on your Windows desktop or print server.



### **Domestic MICR or International MICR (Radio Buttons)**

If you are printing checks domestically, (United States & Canada) select **Domestic MICR**. If you are not located in the United States or Canada or will be printing checks for use in a country other than the United States or Canada, select International MICR for additional language fonts.

### **Install Barcode Fonts (Check Box)**

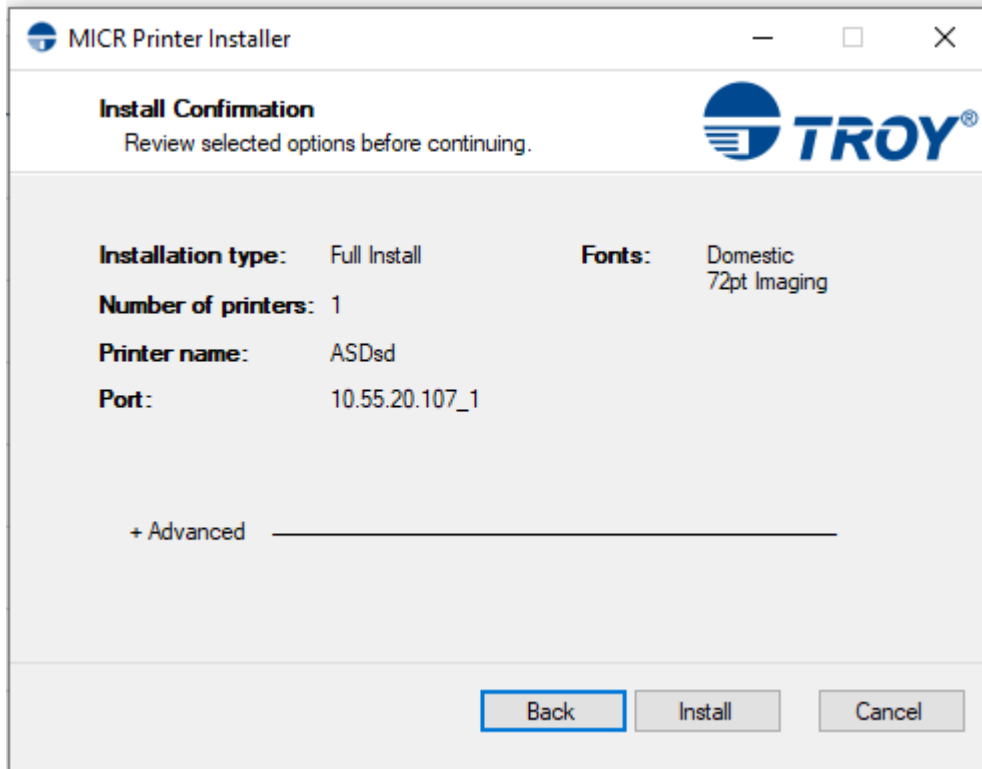
Checking this box includes the industry-standard TROY Barcode Fonts in the installation.

### **Install TROY Signature Fonts (Check Box) and 72pt or 12pt (Radio Buttons)**

Checking this box includes the TROY Signature Fonts in the installation. These fonts require the printer to have a TROY Digital Imaging Kit installed. The Digital Imaging Kits are manufactured in both 1LPI (72pt) and 6LPI (12pt). To verify whether you require 1LPI or 6LPI installation, refer to the Digital Imaging Data Sheet that came with your Imaging Kit under Windows Support Information. 1LPI fonts are of the 200 series family (201, 202, 203, etc.), and 6LPI fonts are of the 100 series family (102, 103, 104, etc.).

**Install Confirmation summary:**

When you have completed your selections and are ready to begin the installation click the **Begin Installation button**. Once the installation begins you will be presented with a status window which displays the progress of the installation.





Installing Printer  
Extracting Printer Driver

This can take several minutes. Thank you for your patience.

