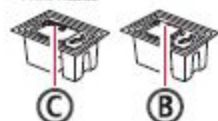


# Setting Up the Printer

## 1. Box Contents

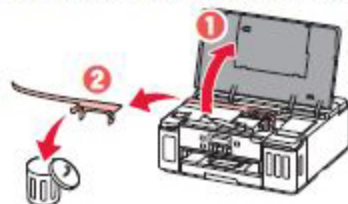
● Print heads



● Ink bottles  
● Power cord  
● Setup CD-ROM  
● Safety and Important Information  
● Getting Started (this manual)

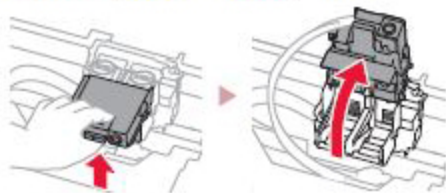
## 2. Removing Packing Materials

- 1 Remove and dispose of any packing materials and orange tape.
- 2 Open the top cover, remove and dispose of the orange tape and protective material inside.

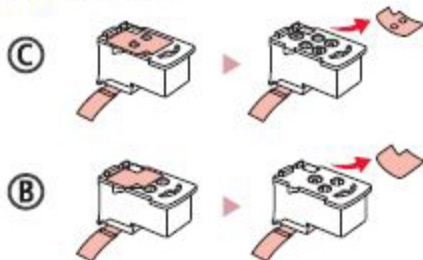


## 3. Installing the Print Heads

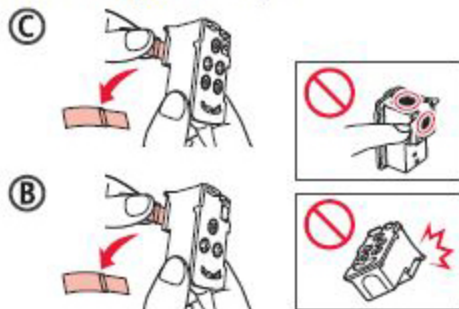
- 1 Open the print head locking cover.



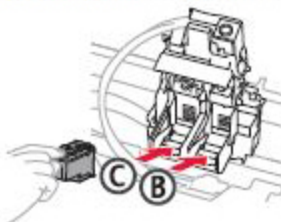
- 2 Take out each print head from the package and remove the label.



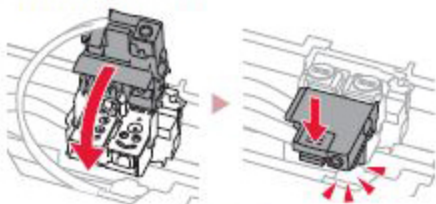
- 3 Remove the protective tape.



- 4 Insert the C (color) print head on the left and the B (black) print head on the right.



- 5 Close the print head locking cover and press down until it clicks.



- 6 Press down both joint buttons completely until they click.



**Check!**



# Setting Up the Printer

## 4. Pouring Ink

### Important

This product requires careful handling of ink. Ink may splatter when the ink tanks are filled with ink. If ink gets on your clothes or belongings, it may not come off.

- 1 Open the ink tank cover and tank cap on the left of the printer.



- 2 Hold the ink bottle upright and gently twist the bottle cap to remove.

### Check!



- 3 Align the nozzle of the ink bottle with the inlet.



- 4 Slowly stand the ink bottle upside down and push down to pour the ink.

- If the ink does not pour, gently remove the ink bottle and try again.



- 5 Gently remove the ink bottle from the inlet.

- Be careful not to spill the ink.

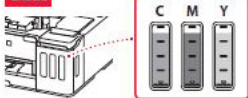


- 6 Replace the tank cap **securely**, and then close the ink tank cover.

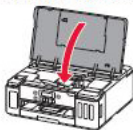


- 7 Repeat steps 1 through 6 to pour all ink into the corresponding ink tanks on the right.

### Check!

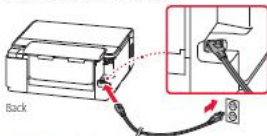


- 8 Close the top cover.



## 5. Turning on the Printer

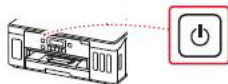
- 1 Connect the power cord.



### Important

At this time, do not connect any other cables.

- 2 Press the ON button.



- 3 When the following screen appears, use the ◀ and ▶ buttons to select a language, and then press the OK button.



►►► Important

If an error appears on the screen, see "If an error message (support code) appears on the screen" on page 3 and follow the instructions.

## 6. Loading Paper

- 1 When the following screen appears, use the ◀ and ▶ buttons to select Yes, and then press the OK button.

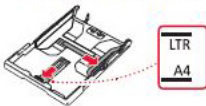


- 2 Remove the cassette from the printer.



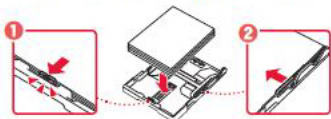
- 3 Slide apart the paper guides.

- Slide the right paper guide to the right edge. Align the front paper guide with the Letter or A4 mark.

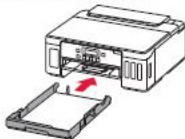


- 4 Load paper.

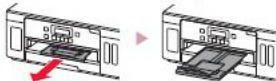
- Load 2 or more sheets of Letter or A4 sized plain paper with the print side facing down.
- Place the paper against the front paper guide, and align the right paper guide to the width of the paper.



- 5 Replace the cassette.

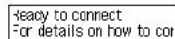


- 6 Pull out the paper output tray.

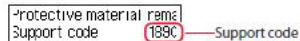


- 7 Follow the on-screen instructions, and then press the OK button.

- Check that **Ready to connect** appears on the printer's screen.



### ? If an error message (support code) appears on the screen



Check the support code, and then follow the instructions if the displayed code is written below.

- 1890**  
The protective materials are not removed.  
► "2. Removing Packing Materials" on page 1
- 1470**  
The print heads are not installed correctly.  
► "3. Installing the Print Heads" on page 1
- 1471**  
No print heads are installed.  
► "3. Installing the Print Heads" on page 1
- 1642**  
There may be insufficient ink.  
► "4. Pouring Ink" on page 2

For all other cases, refer to the **Online Manual**.

## Connecting to a Computer

If you are using multiple computers, perform these steps on each computer. There are two methods, **A** Online Setup\* and **B** Using the Setup CD-ROM (Windows Only) Provided\*.



### **A** Online Setup

- 1 Access the Canon website from a computer.

<https://ij.start.canon>



- 2 Select  **Set Up**.
- 3 Enter your printer's model name and click **Go**.
- 4 Click **Start**.

- 5 Click **If you have already prepared your printer, go to Connect**.

#### **Note**

The following steps are for Windows (except Windows 10 in S mode) and macOS users. For other operating systems, continue setup by following the on-screen instructions instead.

- 6 Click **Download**.
  - The setup file is downloaded to your computer.
- 7 Run the downloaded file.
- 8 Proceed to step 9 on page 5.

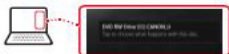
## B Using the Setup CD-ROM (Windows Only) Provided

- 1 Insert the Setup CD-ROM into your computer.
- 2 Follow the instructions for your version of Windows.



### Windows 10/Windows 8.1

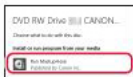
- 1 Click on the following message when it appears on the right-hand side of your computer screen.



#### »»» Note

If the message does not appear (or is no longer visible), click the **File Explorer** icon in the taskbar. On the left-hand side of the window, click **This PC**. Double click the CD icon that is displayed on the right-hand side. When the content of the CD is displayed, double click **Msetup4.exe**. Proceed to 3.

- 2 Click **Run Msetup4.exe**.



- 3 If the **User Account Control** dialog box appears, click **Yes**.

### Windows 7

- 1 Click **Run Msetup4.exe**.

- When the **AutoPlay** screen appears, click **Run Msetup4.exe**.



#### »»» Note

If the **AutoPlay** screen does not appear, in the Start menu, click **Computer**. On the right-hand side of the window, double click the CD icon. When the content of the CD is displayed, double click **Msetup4.exe**.

- 2 If the **User Account Control** dialog box appears, click **Continue**.

- 3 Proceed to step 9 below.

- 9 Click **Start Setup**.



- 10 Follow the on-screen instructions.
  - These operations may take some time.

- 11 When the following screen appears, click **Exit**.



Your printer is now connected to your computer. To connect to a smartphone as well, see "7-b. Connecting to a Smartphone" on page 6.

## 7-b

### Connecting to a Smartphone

If you are using multiple smartphones, perform these steps on each smartphone.

Prepare the following before starting.

- 1 Enable the Wi-Fi setting on your smartphone.
- 2 Connect your smartphone to the wireless router (if you have a wireless router).  
Refer to your smartphone and wireless router manuals for more details.



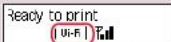
#### 1 Install the "Canon PRINT Inkjet/SELPHY" app on your smartphone.

- Scan the QR code shown on the right to access the Canon website, and then download the app.



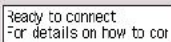
#### 2 Check the printer's screen and proceed to each step.

If the following screen is displayed



- If **Wi-Fi** or **LAN** is displayed, → **C**
- If **Wi-Fi** or **LAN** is not displayed, → **E**

If the following screen is displayed, → **D**



Ready to connect  
For details on how to continue, refer to "Getting Started"

#### Note

- The printer's screen turns off when the printer is idle for 10 minutes. Press any button (except the **ON** button) on the operation panel to turn on the screen.
- If **X Wi-Fi** appears, the printer cannot communicate by Wi-Fi connection. For details, refer to "Frequently Asked Questions" at <https://j.start.canon>.

#### C

#### 3 Open the installed app.



#### 4 Follow the on-screen instructions to add your printer.

Once you have added your printer, you can print from the smartphone. To print photos, see "Loading Photo Paper" on page 8.



**D** Procedures vary for iOS and Android. Follow the instructions for your operating system.

### IOS

- 3 Tap **Settings** on your smartphone's home screen, and tap **Canon\_ij\_XXXX** in the Wi-Fi settings.



#### »»» Note

If **Canon\_ij\_XXXX** does not appear, follow the procedure in **E** and then search for **Canon\_ij\_XXXX** again.

- 4 Open the installed app, and then follow the on-screen instructions to add your printer.

- The printer is added with the most appropriate connection method for the environment you are using.



### Android

- 3 Open the installed app, and then follow the on-screen instructions to add your printer.

- The printer is added with the most appropriate connection method for the environment you are using.



#### »»» Note

If a message saying **"No printer has been added. Perform printer setup?"** does not appear after starting the application, follow the procedure in **E** and then return to smartphone operations.

Once you have added your printer, you can print from the smartphone. To print photos, see "Loading Photo Paper" on page 8.

### E

- 3 Press and hold the **Wireless connect** button for about 3 seconds.



- 4 When **Follow the instructions on the PC or smartphone, etc.** appears on the printer's screen, proceed to **D**.

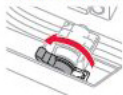
# Transporting Your Printer

When relocating the printer, make sure of the following. Refer to the **Online Manual** for details.

Check that both joint buttons are pressed down completely to avoid ink leaks.



Check that the position of the ink valve lever is closed.



Pack the printer in a plastic bag in case ink leaks.

- Pack the printer in a sturdy box so that it is placed with its bottom facing down, using sufficient protective material to ensure safe transport.
- Do not tilt the printer. Ink may leak.
- Please handle with care and ensure the box remains flat and NOT turned upside down or on its side, as the printer may be damaged and ink in the printer may leak.
- When a shipping agent is handling transport of the printer, have its box marked "THIS SIDE UP" to keep the printer with its bottom facing down. Mark also with "FRAGILE" or "HANDLE WITH CARE".

